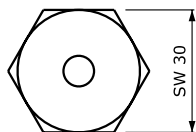
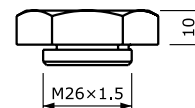
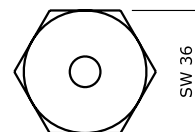


## VÝMENNÉ ELEKTRÓDY

**SW 30**  
PRE M4, M5,  
M6, M8



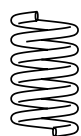
**SW 36**  
PRE M10, M12



OTVOR V PLECHU ØD	M4, M5	OTVOR V PLECHU ØD	M6	OTVOR V PLECHU ØD	M8	OTVOR V PLECHU ØD	M10	OTVOR V PLECHU ØD	M12
4.5	1111-ZK-20000	6.5	1111-ZK-20031	8.5	1111-ZK-20104	11.0	1111-ZK-20166	13.0	1111-ZK-20192
4.6	1111-ZK-20001	6.6	1111-ZK-20032	8.6	1111-ZK-20105	11.1	1111-ZK-20167	13.1	1111-ZK-20193
4.7	1111-ZK-20002	6.7	1111-ZK-20033	8.7	1111-ZK-20106	11.2	1111-ZK-20168	13.2	1111-ZK-20194
4.8	1111-ZK-20003	6.8	1111-ZK-20034	8.8	1111-ZK-20107	11.3	1111-ZK-20169	13.3	1111-ZK-20195
4.9	1111-ZK-20004	6.9	1111-ZK-20035	8.9	1111-ZK-20108	11.4	1111-ZK-20170	13.4	1111-ZK-20196
5.0	1111-ZK-20005	7.0	1111-ZK-20036	9.0	1111-ZK-20109	11.5	1111-ZK-20171	13.5	1111-ZK-20197
5.1	1111-ZK-20006	7.1	1111-ZK-20037	9.1	1111-ZK-20110	11.6	1111-ZK-20172	13.6	1111-ZK-20198
5.2	1111-ZK-20007	7.2	1111-ZK-20038	9.2	1111-ZK-20111	11.7	1111-ZK-20173	13.7	1111-ZK-20199
5.3	1111-ZK-20008	7.3	1111-ZK-20039	9.3	1111-ZK-20112	11.8	1111-ZK-20174	13.8	1111-ZK-20200
5.4	1111-ZK-20009	7.4	1111-ZK-20040	9.4	1111-ZK-20113	11.9	1111-ZK-20175	13.9	1111-ZK-20201
5.5	1111-ZK-20010	7.5	1111-ZK-20041	9.5	1111-ZK-20114	12.0	1111-ZK-20176	14.0	1111-ZK-20202
5.6	1111-ZK-20011	7.6	1111-ZK-20042	9.6	1111-ZK-20115	12.1	1111-ZK-20177	14.1	1111-ZK-20203
5.7	1111-ZK-20012	7.7	1111-ZK-20043	9.7	1111-ZK-20116	12.2	1111-ZK-20178	14.2	1111-ZK-20204
5.8	1111-ZK-20013	7.8	1111-ZK-20044	9.8	1111-ZK-20117	12.3	1111-ZK-20179	14.3	1111-ZK-20205
5.9	1111-ZK-20014	7.9	1111-ZK-20045	9.9	1111-ZK-20118	12.4	1111-ZK-20180	14.4	1111-ZK-20206
6.0	1111-ZK-20015	8.0	1111-ZK-20046	10.0	1111-ZK-20119	12.5	1111-ZK-20181	14.5	1111-ZK-20207
6.1	1111-ZK-20016	8.1	1111-ZK-20047	10.1	1111-ZK-20120	12.6	1111-ZK-20182	14.6	1111-ZK-20208
6.2	1111-ZK-20017	8.2	1111-ZK-20048	10.2	1111-ZK-20121	12.7	1111-ZK-20183	14.7	1111-ZK-20209
6.3	1111-ZK-20018	8.3	1111-ZK-20049	10.3	1111-ZK-20122	12.8	1111-ZK-20184	14.8	1111-ZK-20210
6.4	1111-ZK-20019	8.4	1111-ZK-20050	10.4	1111-ZK-20123	12.9	1111-ZK-20185	14.9	1111-ZK-20211
6.5	1111-ZK-20020	8.5	1111-ZK-20051	10.5	1111-ZK-20124	13.0	1111-ZK-20186	15.0	1111-ZK-20212
6.6	1111-ZK-20021	8.6	1111-ZK-20052	10.6	1111-ZK-20125	13.1	1111-ZK-20187	15.1	1111-ZK-20213
6.7	1111-ZK-20022	8.7	1111-ZK-20053	10.7	1111-ZK-20126	13.2	1111-ZK-20188	15.2	1111-ZK-20214
6.8	1111-ZK-20023	8.8	1111-ZK-20054	10.8	1111-ZK-20127	13.3	1111-ZK-20189	15.3	1111-ZK-20215
6.9	1111-ZK-20024	8.9	1111-ZK-20055	10.9	1111-ZK-20128	13.4	1111-ZK-20190	15.4	1111-ZK-20216
7.0	1111-ZK-20025	9.0	1111-ZK-20056	11.0	1111-ZK-20129	13.5	1111-ZK-20191	15.5	1111-ZK-20217
7.1	1111-ZK-20026	—	—	11.1	1111-ZK-20130	—	—	—	—
7.2	1111-ZK-20027	—	—	11.2	1111-ZK-20131	—	—	—	—
7.3	1111-ZK-20028	—	—	11.3	1111-ZK-20132	—	—	—	—
7.4	1111-ZK-20029	—	—	11.4	1111-ZK-20133	—	—	—	—
7.5	1111-ZK-20030	—	—	11.5	1111-ZK-20134	—	—	—	—

## PRÍSLUŠENSTVO K DRŽIAKOM ELEKTRÓD

**PRUŽINA**



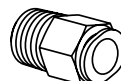
DĹŽKA DRŽIAKA	M4	M5	M6	M8	M10	M12
do 30 mm	1112-ZK-12205	1112-ZK-12205	—	—	—	—
od 40 mm	1112-ZK-12204	1112-ZK-12204	1112-ZK-12206	1112-ZK-12206	1112-ZK-12207	1112-ZK-12207

**O-KRÚŽOK**



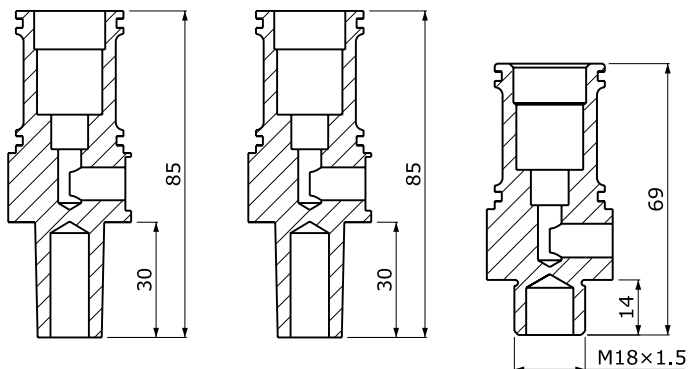
Ø	M4 – M12
28	1123-ZK-16436 (M4 až M8)
34	1123-ZK-26187 (M10 až M12)

**RÝCHLOSPOJKA**

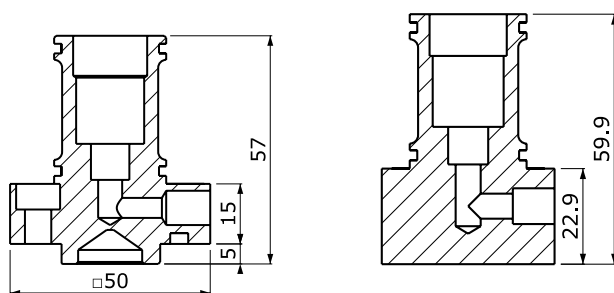


—	OZNAČENIE
prívod stlačeného vzduchu G1/8"-Ø6	1116-ZK-12353

## DRŽIAKY ELEKTRÓD

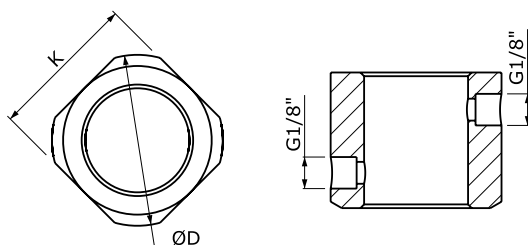


VEĽKOSŤ MATICE	KUŽEL' MK2	KUŽEL' MK3	ZÁVIT M18x1.5
M4, M5, M6, M8	1111-ZK-20542	1111-ZK-20543	1111-ZK-20562
M10, M12	1111-ZK-20544	1111-ZK-20545	1111-ZK-20563



VEĽKOSŤ MATICE	R-TYP	C-TYP
M4, M5, M6, M8	1111-ZK-20642	1111-ZK-20662
M10, M12	1111-ZK-10644	1111-ZK-10663

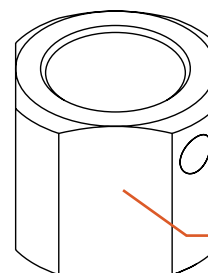
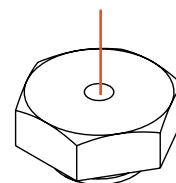
## CHLADIACI KRÚŽOK



VEĽKOSŤ MATICE	OZNAČENIE	ØD	K
M4 až M8	1113-ZK-19766	46	40
C-typ M4 až M8	1113-ZK-19766	46	40
M10, M12	1113-ZK-19767	52	46
C-typ M10 až M12	1113-ZK-19769	52	46

ADVANCED CERAMIC SOLUTIONS  
**DOCERAM**<sup>®</sup>

VÝMENNÁ  
ELEKTRÓDA

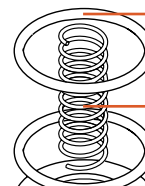


CHLADIACI  
KRÚŽOK



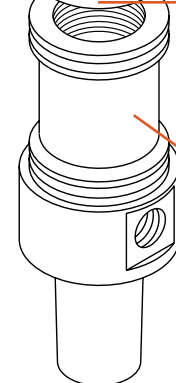
POLOHOVACÍ  
KOLÍK\*

O-KRÚŽOK

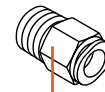


PRUŽINA

O-KRÚŽOK



DRŽIAK  
ELEKTRÓDY



RÝCHLOSPOJKA  
NA STLAČENÝ  
VZDUCH

\* Polohovacie kolíky  
zvoľte z ponuky  
uvedenej na predošlých  
stranách