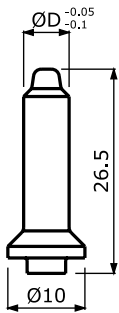


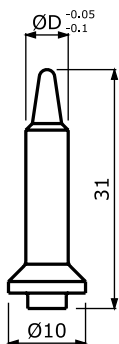
VÝMENNÉ ELEKTRODY

OTVOR V PLECHU ØD	SW 19
4.5	1111-ZK-10000
4.6	1111-ZK-10001
4.7	1111-ZK-10002
4.8	1111-ZK-10003
4.9	1111-ZK-10004
5.0	1111-ZK-10005
5.1	1111-ZK-10006
5.2	1111-ZK-10007
5.3	1111-ZK-10008
5.4	1111-ZK-10009
5.5	1111-ZK-10010
5.6	1111-ZK-10011
5.7	1111-ZK-10012
5.8	1111-ZK-10013
5.9	1111-ZK-10014
6.0	1111-ZK-10015
6.1	1111-ZK-10016
6.2	1111-ZK-10017
6.3	1111-ZK-10018
6.4	1111-ZK-10019
6.5	1111-ZK-10020

KRÁTKY



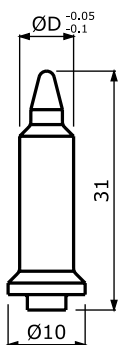
DLHÝ



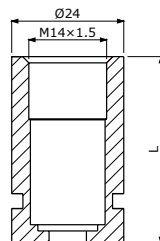
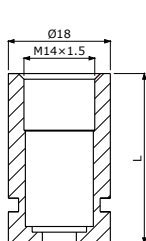
KERAMICKÉ KOLÍKY CERAZUR

OTVOR V PLECHU ØD	KRÁTKY	DLHÝ	S GOLIEROM
4.5	8228-ZK-11000	8228-ZK-10000	8228-ZK-10300
4.6	8228-ZK-11001	8228-ZK-10001	8228-ZK-10301
4.7	8228-ZK-11002	8228-ZK-10002	8228-ZK-10302
4.8	8228-ZK-11003	8228-ZK-10003	8228-ZK-10303
4.9	8228-ZK-11004	8228-ZK-10004	8228-ZK-10304
5.0	8228-ZK-11005	8228-ZK-10005	8228-ZK-10305
5.1	8228-ZK-11006	8228-ZK-10006	8228-ZK-10306
5.2	8228-ZK-11007	8228-ZK-10007	8228-ZK-10307
5.3	8228-ZK-11008	8228-ZK-10008	8228-ZK-10308
5.4	8228-ZK-11009	8228-ZK-10009	8228-ZK-10309
5.5	8228-ZK-11010	8228-ZK-10010	8228-ZK-10310
5.6	8228-ZK-11011	8228-ZK-10011	8228-ZK-10311
5.7	8228-ZK-11012	8228-ZK-10012	8228-ZK-10312
5.8	8228-ZK-11013	8228-ZK-10013	8228-ZK-10313
5.9	8228-ZK-11014	8228-ZK-10014	8228-ZK-10314
6.0	8228-ZK-11015	8228-ZK-10015	8228-ZK-10315

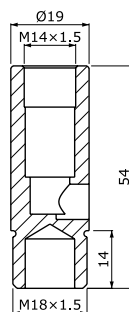
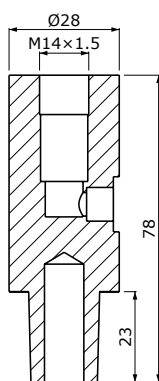
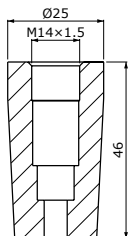
S GOLIEROM



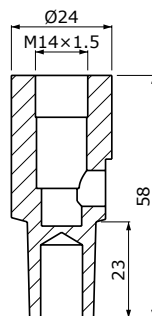
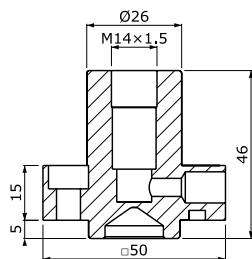
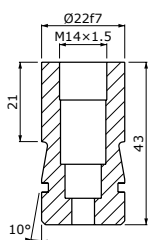
DRŽIAKY ELEKTRÓD



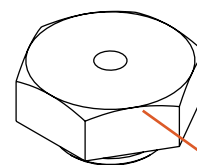
L	Ø18	Ø24
30	1111-ZK-10500	1111-ZK-10506
40	1111-ZK-10501	1111-ZK-10507
50	1111-ZK-10502	1111-ZK-10508



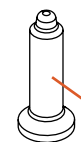
KUŽEL 1:10	KUŽEL MK2	ZÁVIT M18x1.5
1111-ZK-10580	1111-ZK-10540	1111-ZK-10560



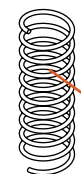
S-TYP	R-TYP	T-TYP
1111-ZK-10680	1111-ZK-10608	1111-ZK-10640



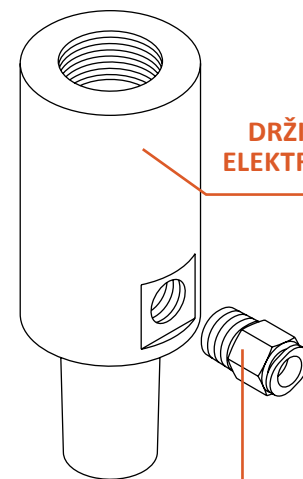
VÝMENNÁ ELEKTRÓDA



POLOHOVACÍ KOLÍK



PRUŽINA



DRŽIAK ELEKTRÓDY

RÝCHLOSPOJKA NA STLAČENÝ VZDUCH

PRÍSLUŠENSTVO K DRŽIAKOM ELEKTRÓD

PRUŽINA



DĹŽKA DRŽIAKA	OZNAČENIE
do 30 mm	1112-ZK-12205
od 40 mm	1112-ZK-12204

O-KRÚŽOK



TYP DRŽIAKA	OZNAČENIE
Ø18	1123-ZK-16434
Ø24	1123-ZK-16435
S-typ	1123-ZK-58440

RÝCHLOSPOJKA



—	OZNAČENIE
prívod stlačeného vzduchu G1/8"-Ø6	1116-ZK-12353